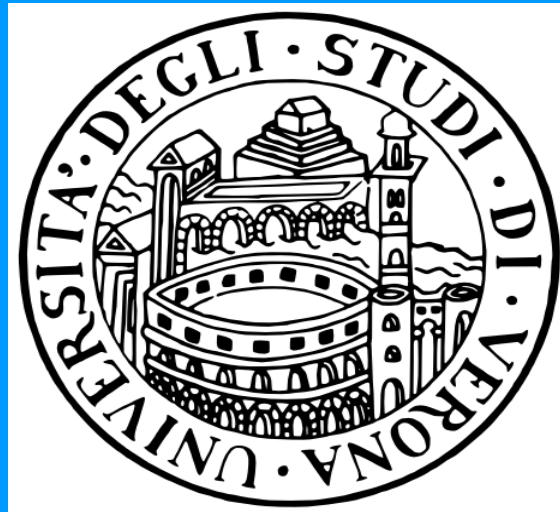


# Impact of Carpentier-McCarthy-Adams IMR ETlogix Ring on Mid-Term Results Repair of Chronic Ischemic Mitral Valve Regurgitation

P. Bertolini, F. Santini, F. Onorati, G. Faggian,  
A. Mazzucco



**Division of Cardiac Surgery - University of Verona – Italy**  
**Mitral Conclave 2011**

# Impact of Carpentier-McCarthy-Adams IMR ETlogix Ring on Mid-Term Results Repair of Chronic Ischemic Mitral Valve Regurgitation

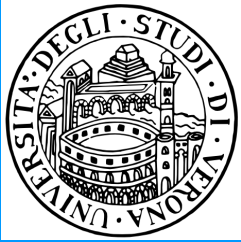


## Indications for operation 2004 - 2009

### Tethering of PML (Ischemic Functional Regurgitation)

- Mean Degree of Regurgitation  $2,7 \pm 0,5$
- (2+/4+) 20 pts. (35%)
- (3/4+/4+) 37 pts. (65%)
  
- Concomitant lesions: 11 pts. (19%)

# Impact of Carpentier-McCarthy-Adams IMR ETlogix Ring on Mid-Term Results Repair of Chronic Ischemic Mitral Valve Regurgitation



## Preoperative Patients Characteristics

|                                   |                 |
|-----------------------------------|-----------------|
| No. of patients                   | 57              |
| Previous cardiac operations       | 5 (8.7 %)       |
| Gender                            |                 |
| • Male                            | 39 (68.4 %)     |
| • Female                          | 18 (31.6 %)     |
| Age                               |                 |
| • Mean                            | 67 $\pm$ 9 yrs. |
| • Range                           | 30-79 “         |
| Ejection Fraction                 | 43 $\pm$ 10 %   |
| N° of coronary art. with stenosis |                 |
| • 1 Vessel                        | 11 (22%)        |
| • 2 Vessels                       | 20 (40 %)       |
| • 3 Vessels                       | 19 (38 %)       |
| Associated Pathology*             | 15 (26,3 %)     |

\* LV Aneurysm (4), Tricuspid Regurgitation (2), Aortic Stenosis (8) Asc Ao An. (1)

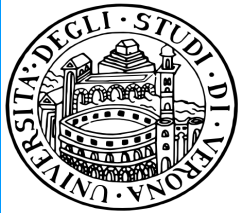
# Impact of Carpentier-McCarthy-Adams IMR ETlogix Ring on Mid-Term Results Repair of Chronic Ischemic Mitral Valve Regurgitation



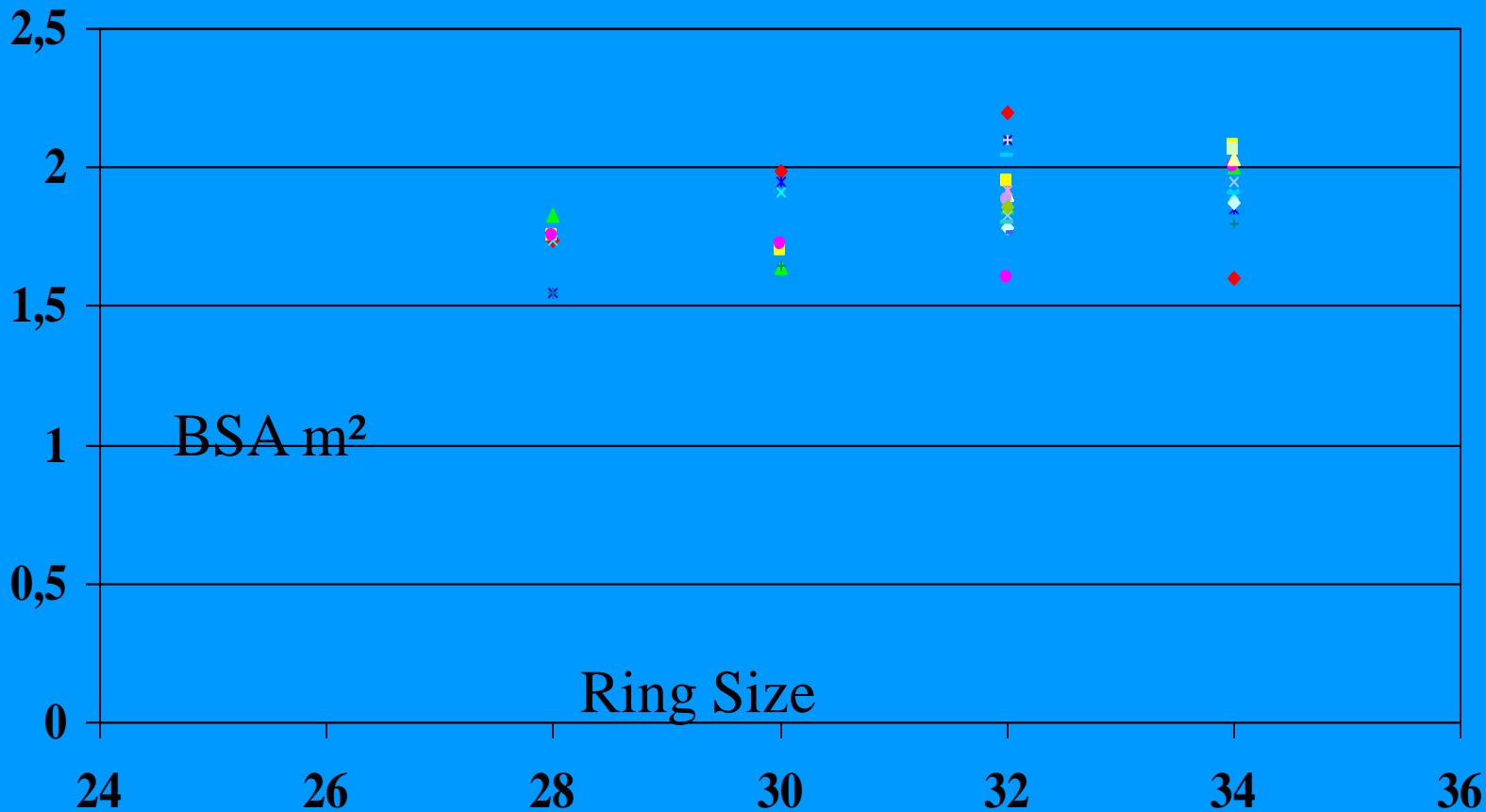
## Surgical Procedures (57 pts.)

No. (%)

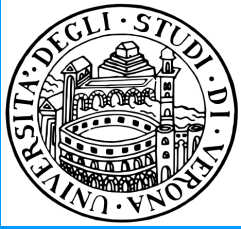
- Valve Repair Alone (CMA IMR Etlogix ring) 7 (12.3)
- Concomitant Procedure
  - CABG 50 (87.7)
  - LV Aneurysmectomy 4 (7)
  - Aortic Valve Replacement 8 (14)
  - Tricuspid Repair 2 (3.5)
  - Asc. Aorta Replacement 1 (1.7)



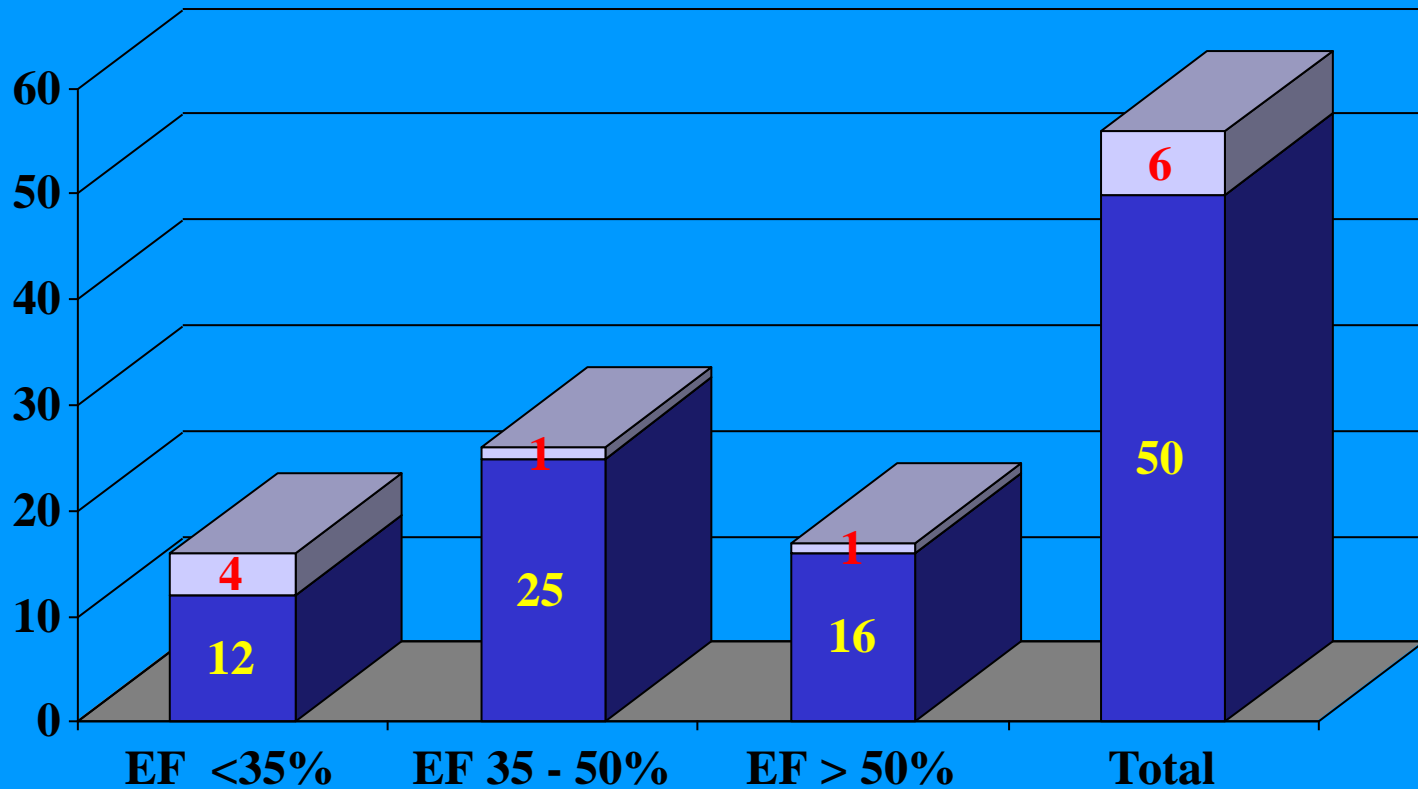
# Impact of Carpentier-McCarthy-Adams IMR Etlogix Ring on Mid-Term Results Repair of Chronic Ischemic Mitral Valve Regurgitation



**CMA IMR Etlogix ring size (mm)**  
**Mean 31±2 Range 28 – 34 (mm)**



# Impact of Carpentier-McCarthy-Adams IMR ETlogix Ring on Mid-Term Results Repair of Chronic Ischemic Mitral Valve Regurgitation



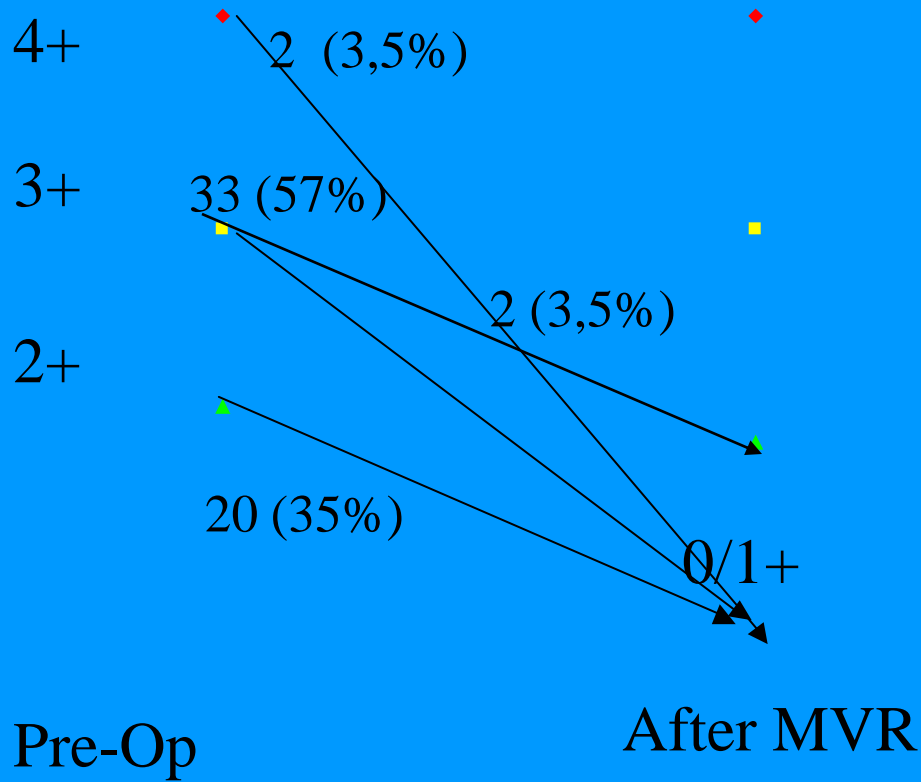
Results: 1 op Death; 6 Deaths at follow-up:

12 – 70 months (mean  $37 \pm 20$ )

Myocardial Infarction/Heart Failure = 5/1



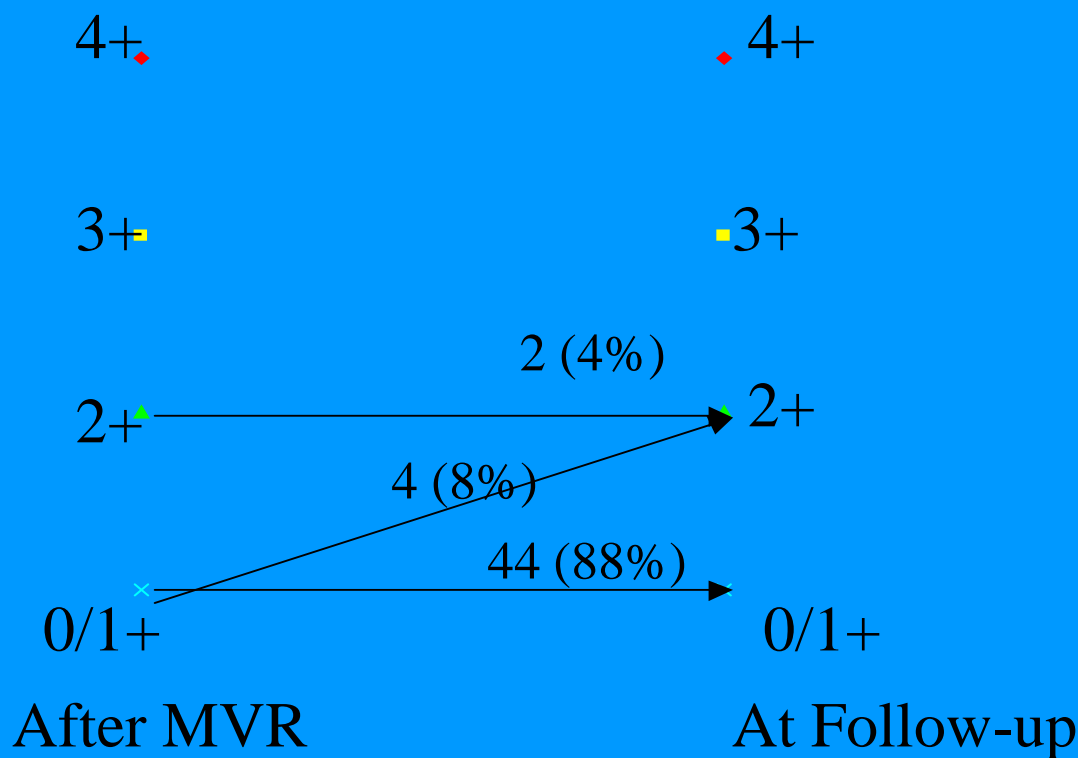
# Impact of Carpentier-McCarthy-Adams IMR ETlogix Ring on Mid-Term Results Repair of Chronic Ischemic Mitral Valve Regurgitation



**Changes in Degree of Regurgitation After Surgery**



# Impact of Carpentier-McCarthy-Adams IMR ETlogix Ring on Mid-Term Results Repair of Chronic Ischemic Mitral Valve Regurgitation

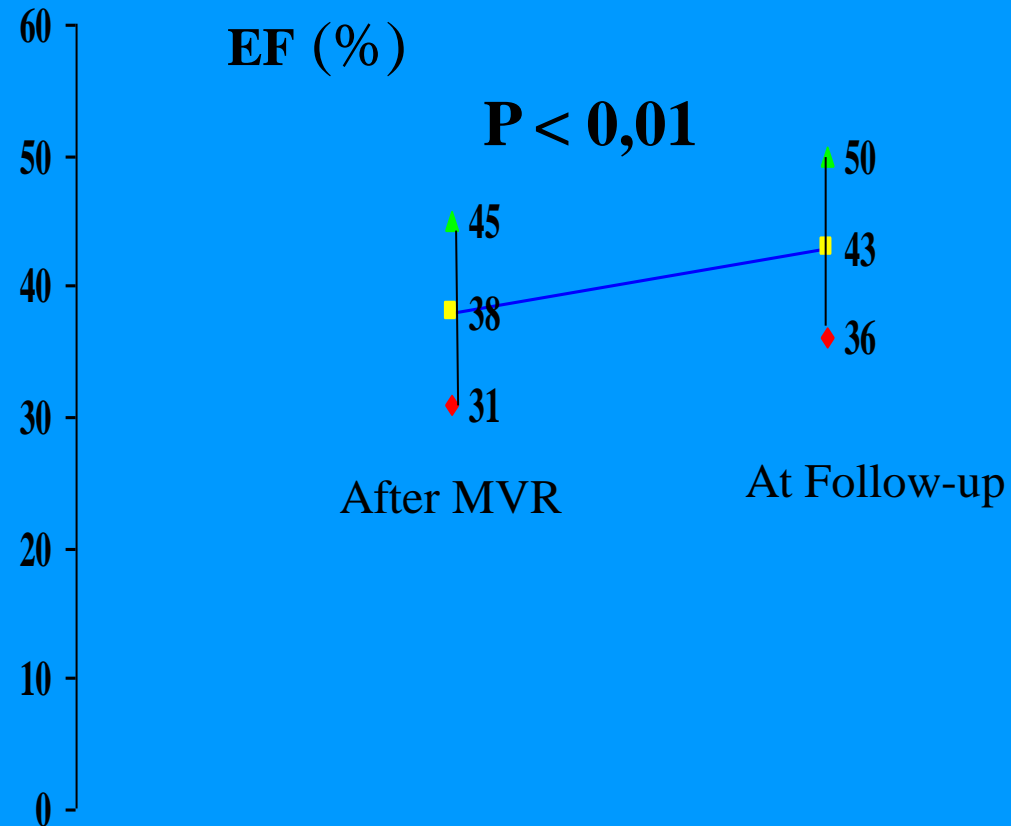
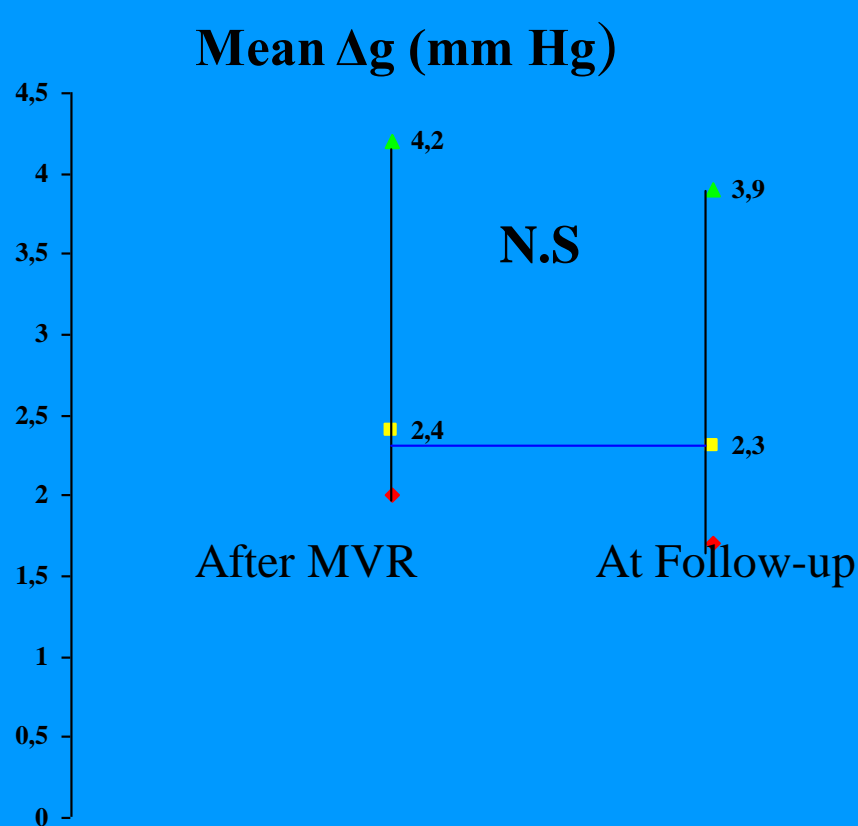


**Changes in degree of ischemic mitral regurgitation**



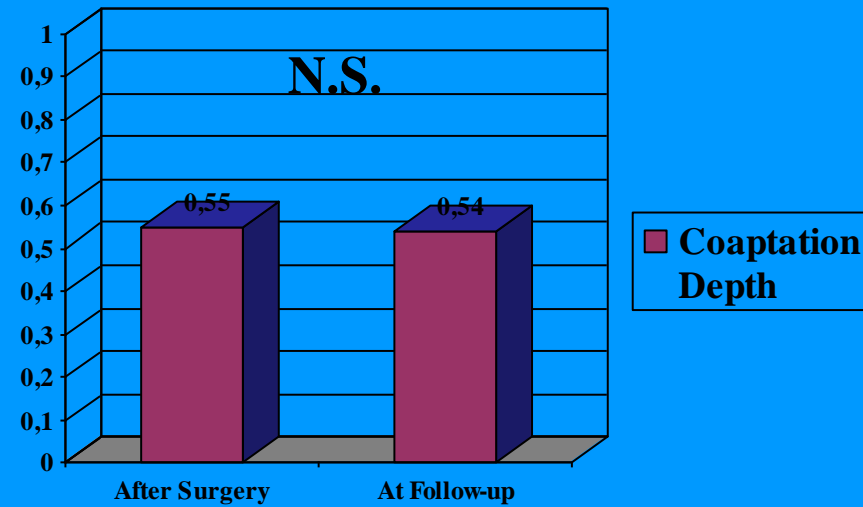
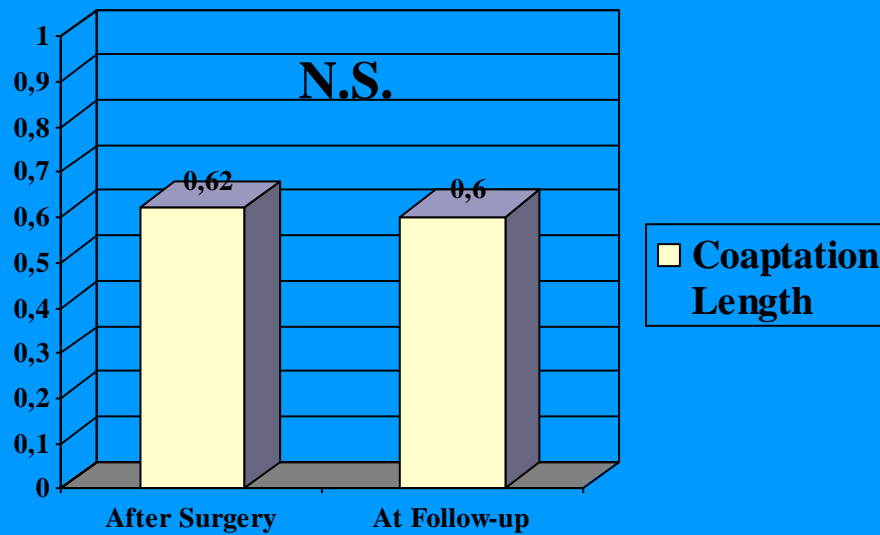


# Impact of Carpentier-McCarthy-Adams IMR Etlogix Ring on Mid-Term Results Repair of Chronic Ischemic Mitral Valve Regurgitation

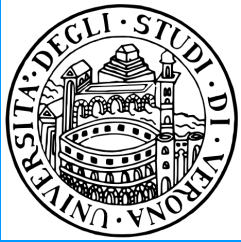


Comparison of Echocardiographic Parameters  
After Surgery vs. At Follow-up 37±20 months (12-70)

# Impact of Carpentier-McCarthy-Adams IMR Etlogix Ring on Mid-Term Results Repair of Chronic Ischemic Mitral Valve Regurgitation

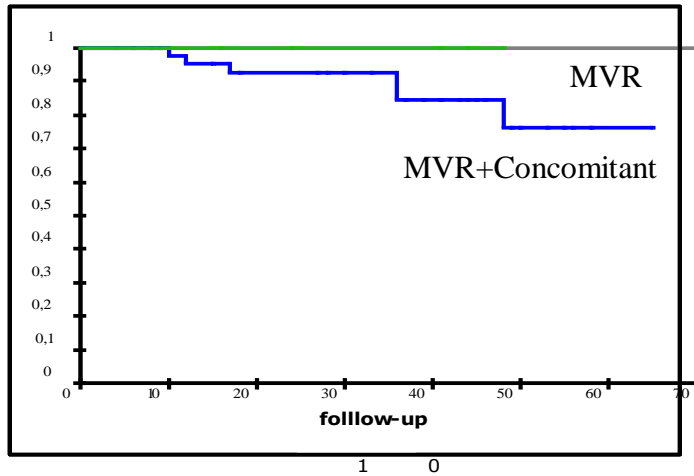


Comparison of Echocardiographic Parameters  
After Surgery vs. Follow-up

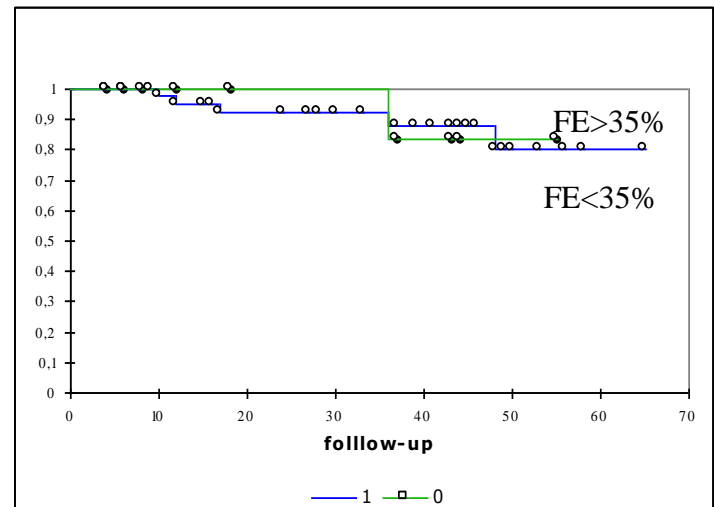


# Impact of Carpentier-McCarthy-Adams IMR ETlogix Ring on Mid-Term Results Repair of Chronic Ischemic Mitral Valve Regurgitation

M/R vs M/R + Concomitant Proc = n.s.



FE < 35 vs FE > 35% = n.s.



Results at Follow-up

# Impact of Carpentier-McCarthy-Adams IMR ETlogix Ring on Mid-Term Results Repair of Chronic Ischemic Mitral Valve Regurgitation



## Conclusions

- Low incidence of recurrent mitral regurgitation
- MVR of CIMR (type IIIb MR) with the MCA IMR ETlogix Ring seems to offer stable results at mid-term follow-up
- MCA IMR ETlogix Ring possibly avoids disadvantages of annular undersizing